


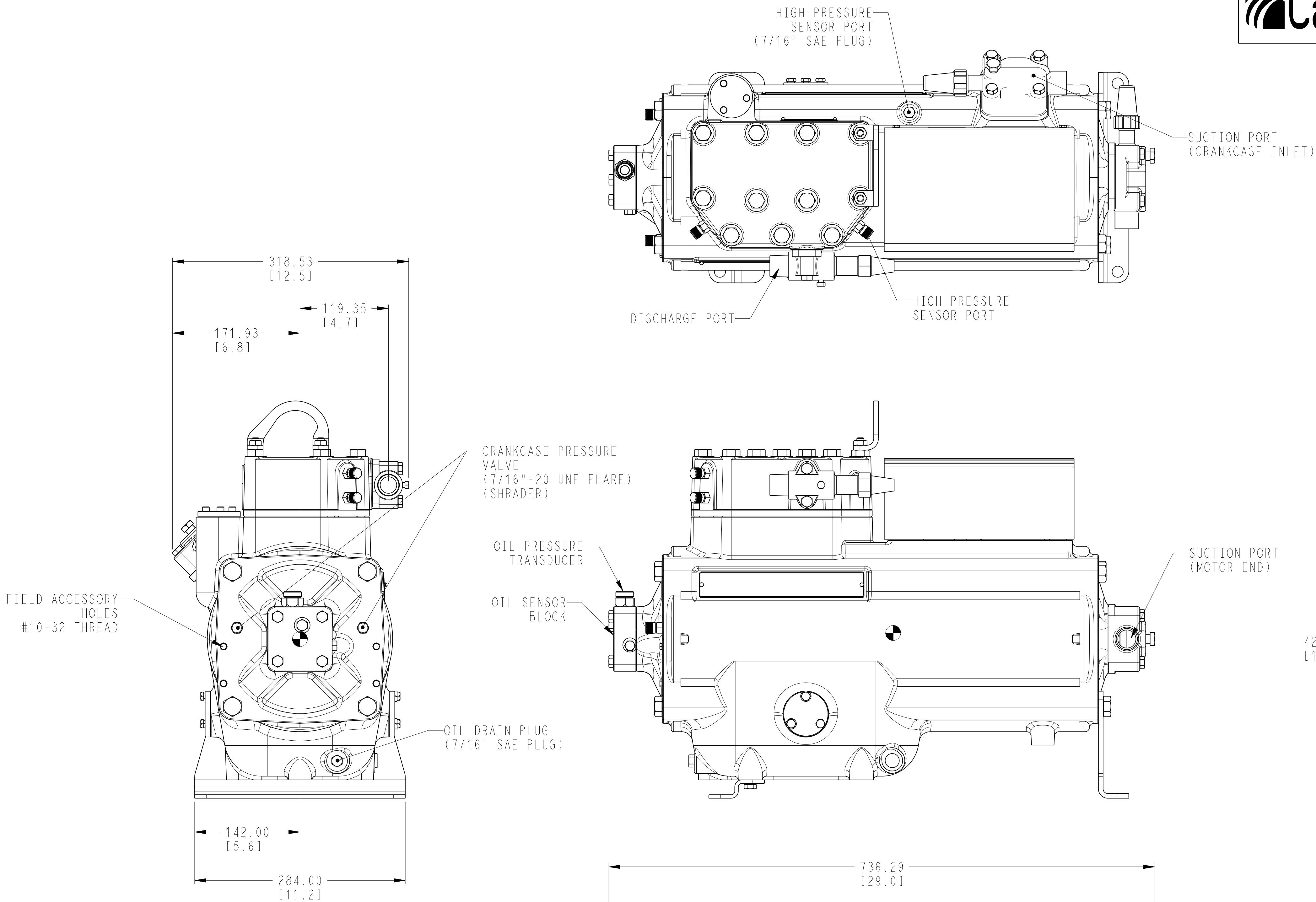
MODELS REPRESENTED	CFM	NOM. HP	SERVICE CONNECTIONS		DRY WEIGHT
			SUCTION LINE SIZE	DISCHARGE LINE SIZE	
06MA015	15.5 / 25.5 m3/hr	12 / 8.8 kw	1-1/8 IN / 28.575 mm	7/8 IN / 22.225 mm	379 LBS / 171.91 kg
06MA018	18.4 / 31.3 m3/hr	14 / 10.3 kw	1-1/8 IN / 28.575 mm	7/8 IN / 22.225 mm	384 LBS / 174.18
06MA021	21.2 / 36 m3/hr	17 hp / 12.5 kw	1-3/8 IN / 34.925 mm	1-1/8 IN / 28.575 mm	387 LBS / 175.54 kg
06MA024	24.1 / 40.9 m3/hr	20 hp / 14.7 kw	1-3/8 IN / 34.925 mm	1-1/8 IN / 28.575 mm	392 LBS / 177.80 kg



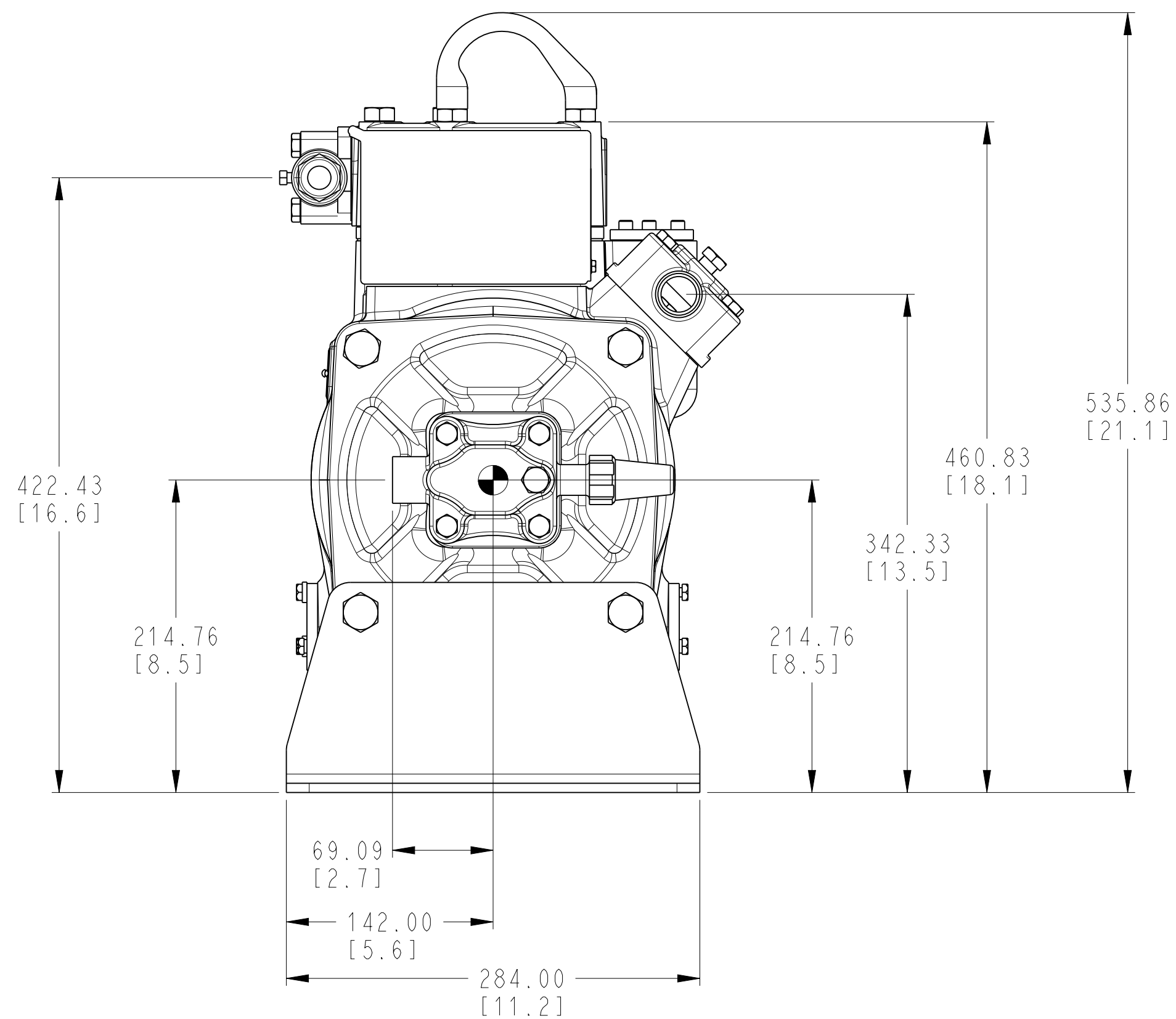
THIS DOCUMENT IS THE PROPERTY OF CARRIER CORPORATION AND IS DELIVERED UPON THE EXPRESS CONDITION THAT THE CONTENTS WILL NOT BE DISCLOSED OR USED WITHOUT CARRIER CORPORATION'S WRITTEN CONSENT.

SUBMISSION OF THESE DRAWINGS OR DOCUMENTS DOES NOT CONSTITUTE PART PERFORMANCE OR ACCEPTANCE OF CONTRACT.





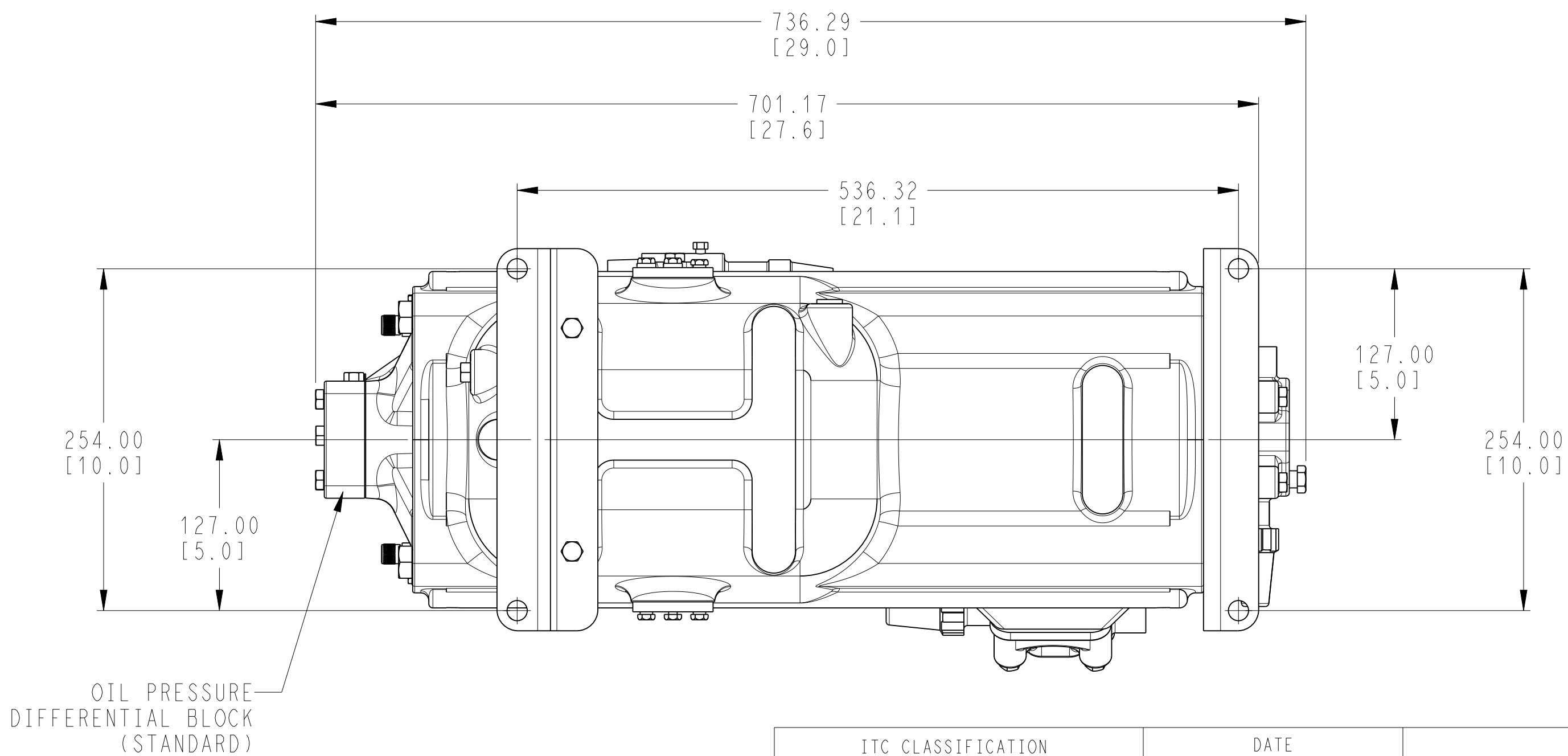
**STANDARD VERSION
(NO UNLOADER)**

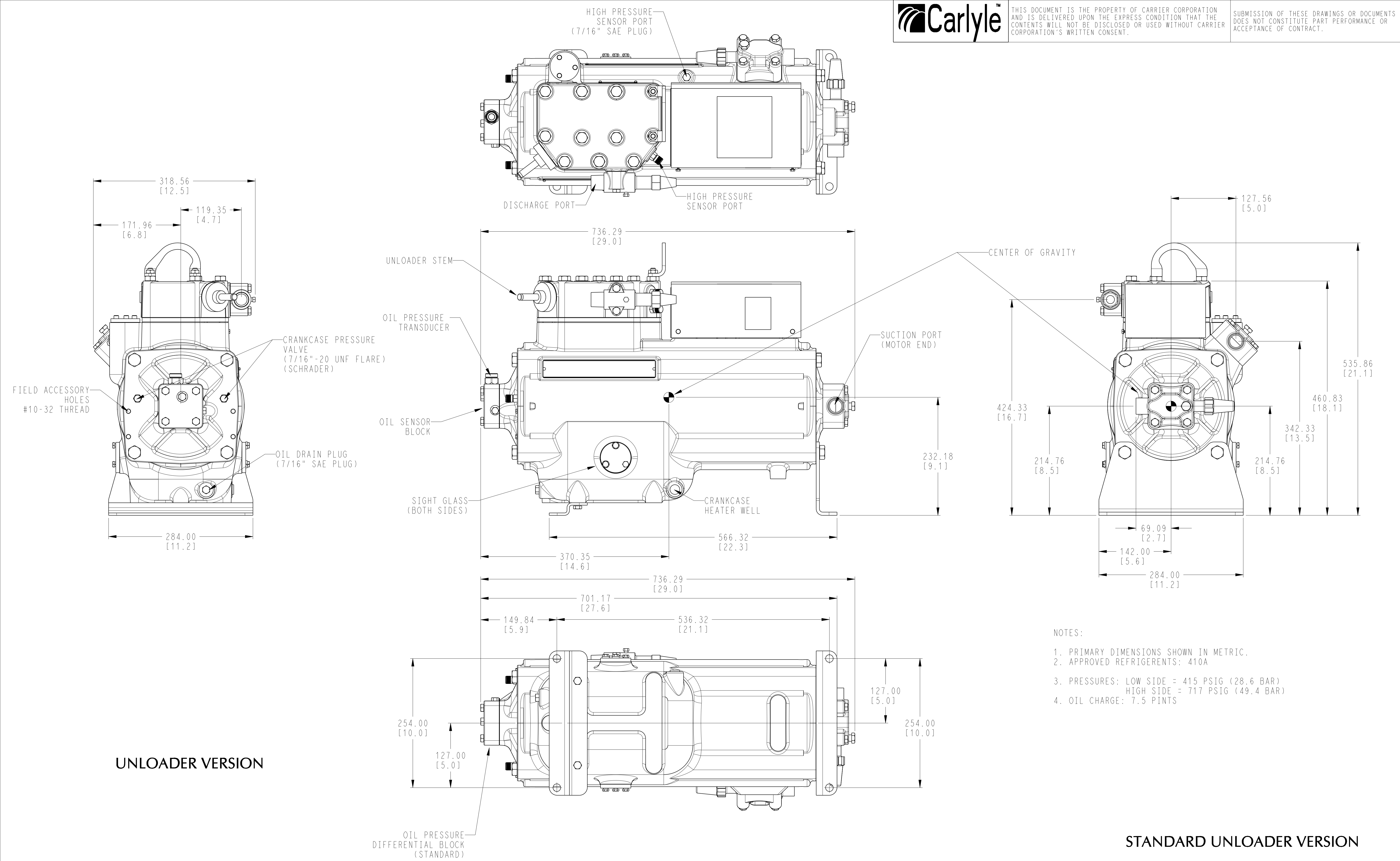


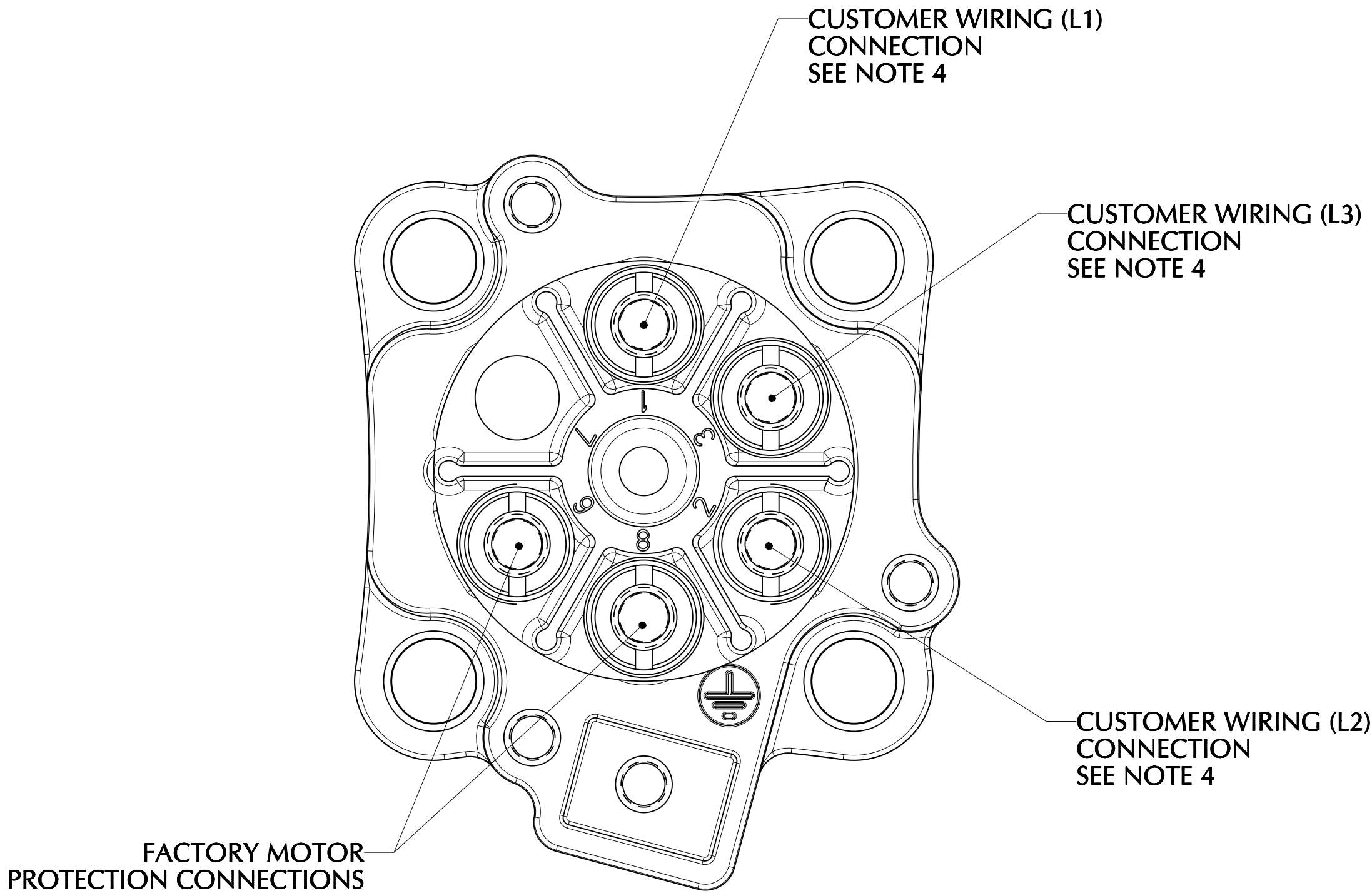
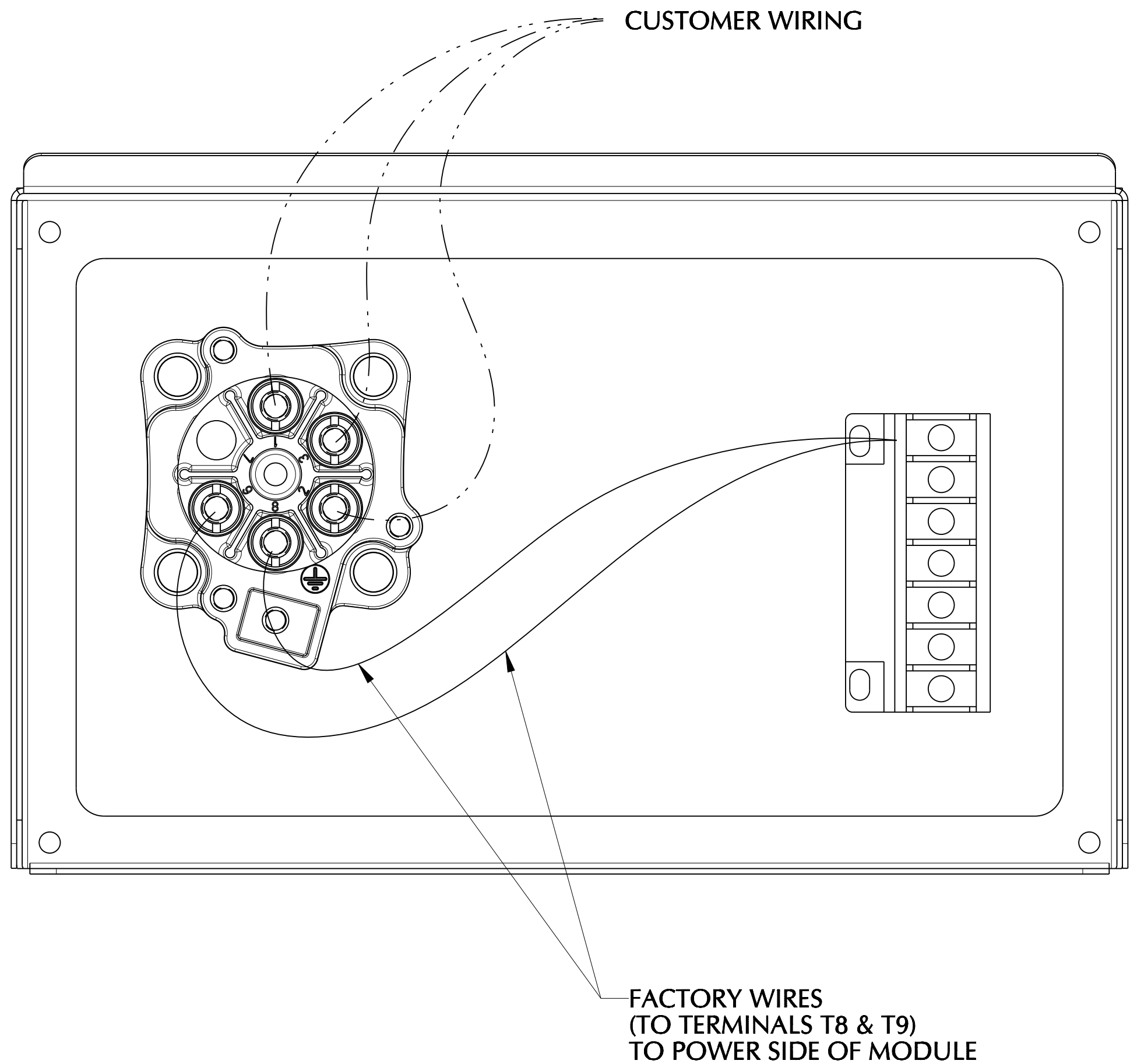
NOTES:

1. PRIMARY DIMENSIONS SHOWN IN METRIC.
2. APPROVED REFRIGERENTS: 410A
3. PRESSURES: LOW SIDE = 415 PSIG (28.6 BAR)
HIGH SIDE = 717 PSIG (49.4 BAR)
4. OIL CHARGE: 7.5 PINTS

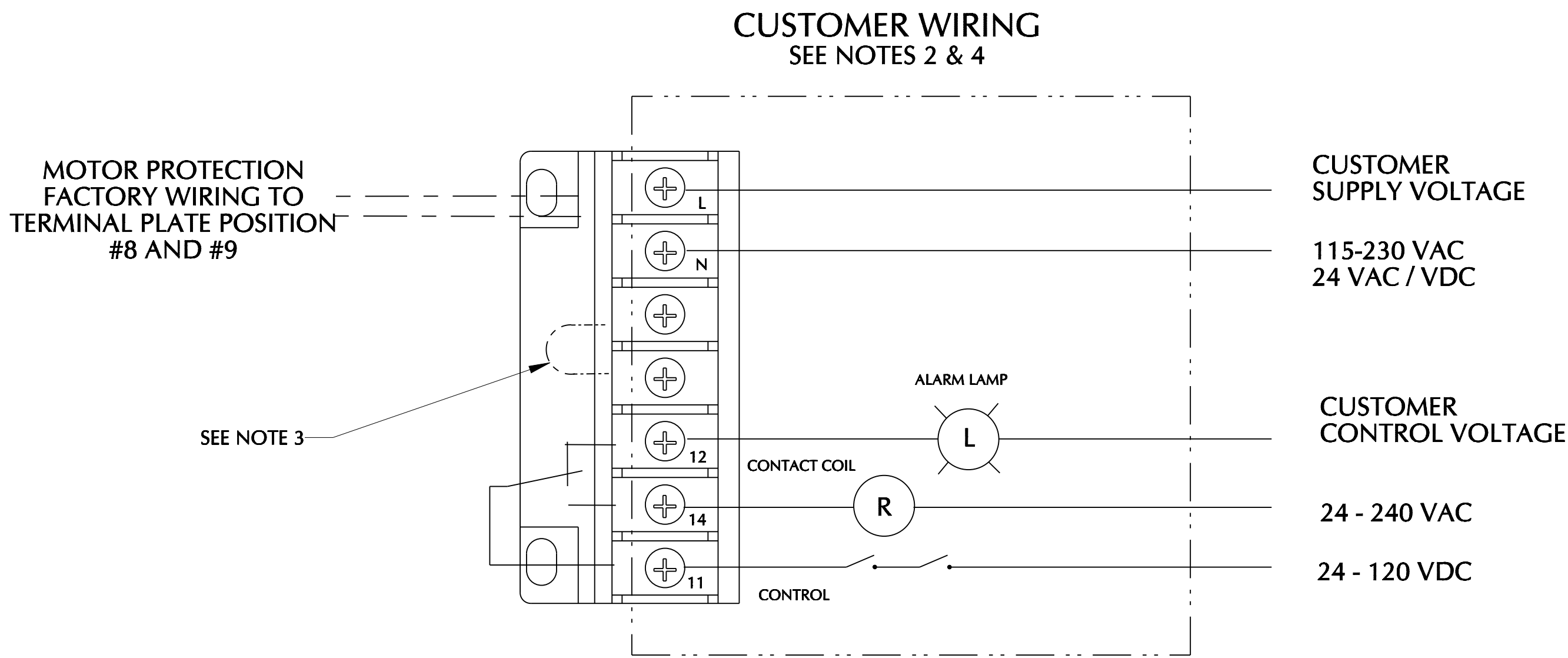
STANDARD VERSION



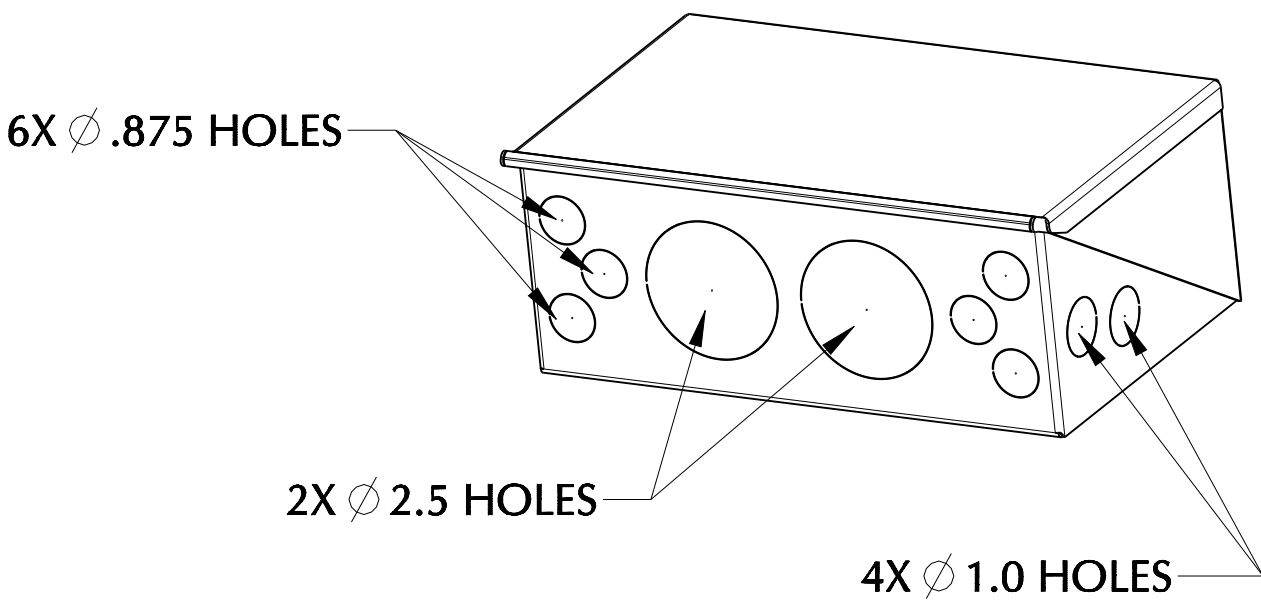




TERMINAL PLATE



STANDARD MODULE



ELECTRICAL BOX

- DO NOT ATTEMPT TO REMOVE, INSPECT OR RE-INSTALL ANY OF THE INTERNAL PARTS WITHOUT REFERRING TO SERVICE MANUAL.
- TERMINALS 11 & 14 ARE NORMALLY OPEN (NO)
TERMINALS 11 & 12 ARE NORMALLY CLOSED (NC)
- FACTORY INSTALLED JUMPER. DO NOT REMOVE.
- SUPPLY VOLTAGE IS 115/230 VAC, 24 VAC, OR 24 VDC. CHECK MOTOR PROTECTION LABEL FOR CORRECT VOLTAGE.
- 1/4-28 TERMINAL STUDS CUSTOMER WIRING TO THE TERMINAL PLATE MUST BE PROVIDED WITH RING TERMINALS TO ACCOMODATE THE 1/4-28 STUDS. TIGHTEN TERMINAL NUTS TO 30 IN-LBS MAX (5) PLACES.